

Reutlinger MultiRail System

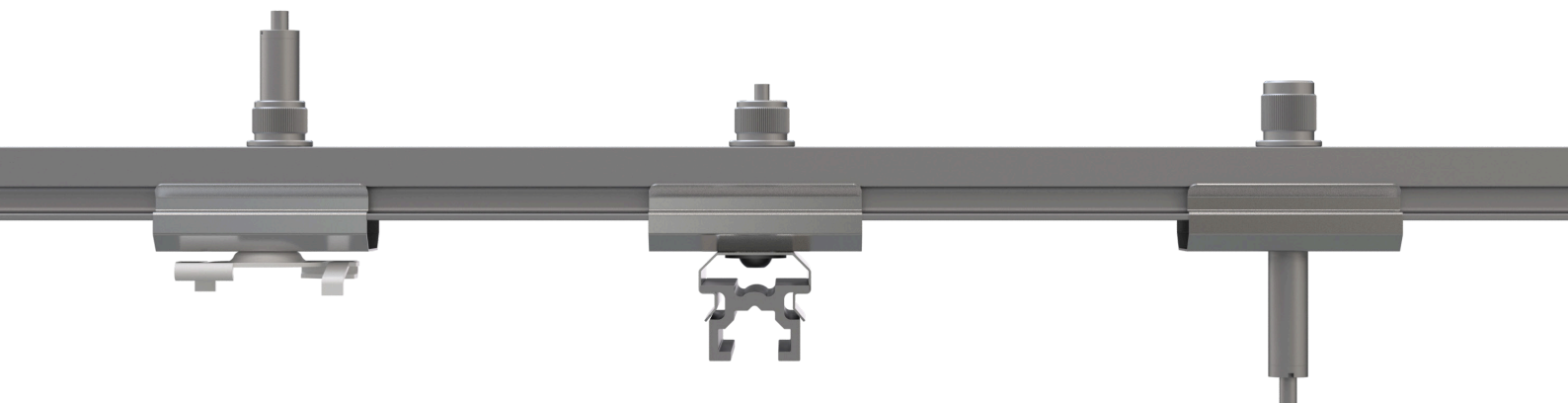
“MultiRail” – a high-quality modular suspension system for industrial and building services applications

The new Reutlinger MultiRail system is the epitome of flexibility: It ensures masterful suspension not only of ceiling elements and acoustic components, but is also ideally suited for shopfitting purposes as well as for the presentation of works of art and other objects. Its modularity offers almost endless options of use ... plus many further benefits:

The MultiRail system is lightweight, compact and – despite its delicate appearance – it ensures stability in many different suspension scenarios. The system is equipped with a flexible adjustment mechanism that allows it to be used with cables (wire ropes) ranging from 0.63mm to 1.5mm in diameter. The MultiRail system is designed for working loads of up to 25kg (at a safety factor of 5) per suspension.

Features

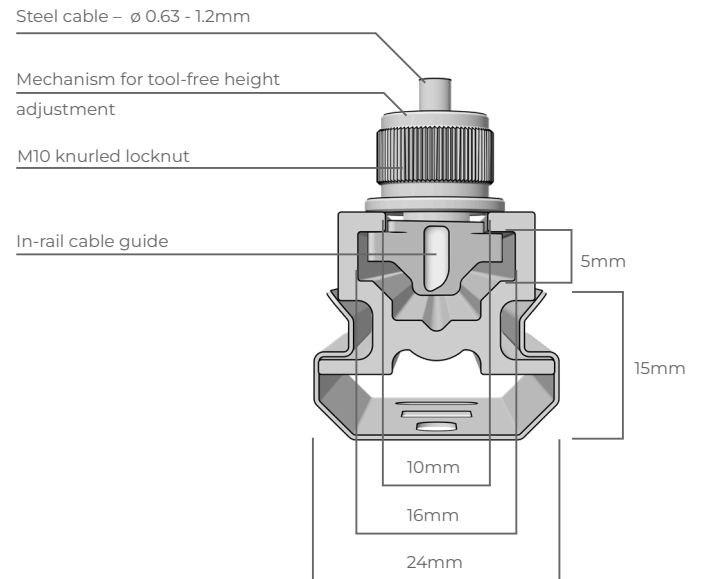
- Unobtrusive visual appearance thanks to its delicate and compact design
- High-quality material: anodised aluminium and stainless steel
- Various connection options, whether to objects, ceilings or floors
- Self-locking mechanism
 - The heavier the load, the greater the clamping force
- Easy, tool-free handling (for convenient and time-saving installation)



- The quick-fit sliding block sits accurately in the rail for maximum safety Lateral cable exit
 - The cable lowers into the rail's groove and remains invisible
- Rails are supplied in standard lengths and can be trimmed to size as desired
- The rail clamp can be clipped on at any point
- The mounting direction is freely selectable

Areas of Use

- Shopfitting / Shops
- Open-plan offices
- Museums / Galleries
- Acoustic engineering
- All types of indoor suspension

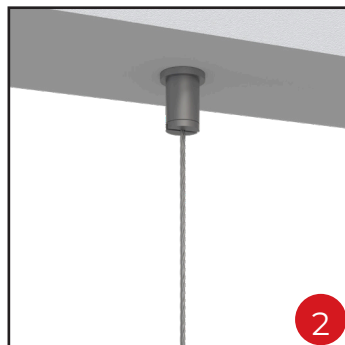


MultiRail Ceiling Attachments

Screw connection to ceiling



Ceiling mount



Track clip



MultiRail Sliding Blocks are safely attached by a 90° turn and then locked in place with an M10 knurled nut

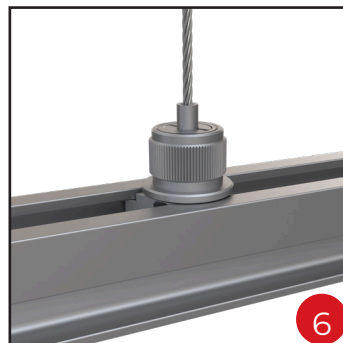
Cable with sleeve



Cable holder Type 15



Cable holder Mini Type 12

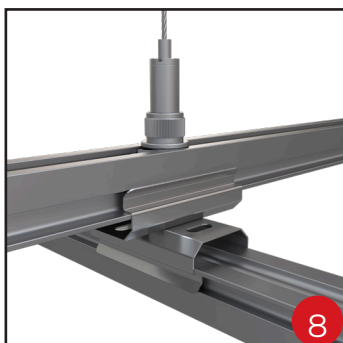


In-rail cable guide



MultiRail Clamps

90° clamp connector



Clamp for cable holder Type 15



Clamp with x-clip



Clamp with y-clip



STEEL CABLEGALVANISED, HIGH TENSILE STRENGTH, DIN EN 12385-4 7 x 7; 2.300 N/mm²

MAX. LOAD IN KG

Ø CABLE IN MM ▸

0.63**0.81****1.0****1.2****1.5****TYP 12**

8.0

12

17

TYP 15

13

17

25

STAINLESS STEEL CABLEDIN EN 12385-4 7 x 7; 1.570 N/mm²

MAX. LOAD IN KG

Ø CABLE IN MM ▸

0.63**0.81****1.0****1.2****1.5****TYP 12**

3.0

6.0

8.0

12

TYP 15

8.0

15

20



The values indicated herein (operating coefficient / safety factor 5) only apply if our cable holders are used with the cables (wire ropes) specified above. Whenever cables with other wire strengths are used, the information provided in the table is not valid. Factory certificates based on special tests can be issued at short notice upon request.

Serial Numbers “MultiRail System”ARTICLE
DESIGNATION

Length

Dimensions

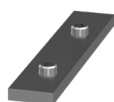
SERIAL
NUMBER

MultiRail aluminium profile rail,
slot width 10 mm; natural anodised
(special lengths available upon
request)

1000mm
2000mm
3000mm

W: 24 mm
H: 16.5 mm

029.006.218
029.006.219
029.006.220

ARTICLE
DESIGNATION

Length

Dimensions

SERIAL
NUMBER

MultiRail rail connector

80mm

15 x 4mm

193.006.428

ARTICLE
DESIGNATIONTotal
heightSERIAL
NUMBER

MultiRail stainless steel clamp

L: 48mm, W: 24mm, H: 15mm

032.001.002

ARTICLE
DESIGNATIONTotal
heightSERIAL
NUMBERMultiRail stainless steel clamp with
hook-in clip (x-direction)

L: 48mm, W: 24mm, H: 27mm

193.006.124

MultiRail stainless steel clamp with
hook-in clip (y-direction)

L: 48mm, W: 24mm, H: 27mm

193.006.132

Serial Numbers “MultiRail System“






ARTICLE DESIGNATION	Total height	SERIAL NUMBER
MultiRail X 90° rail connection	30mm	193.001.337



ARTICLE DESIGNATION	Total height	SERIAL NUMBER
MultiRail stainless steel clamp & track clip	25mm	193.001.334



ARTICLE DESIGNATION	Total height	SERIAL NUMBER	1,0	1,2	1,5
MultiRail stainless steel clamp with cable holder Type 15 (lateral cable exit)	44mm	193.001.336			



ARTICLE DESIGNATION	Total height	SERIAL NUMBER	1,0	1,2	1,5
MultiRail sliding block for cable holder Type 15 (cable exit runs within the rail)	35mm	193.001.324			



ARTICLE DESIGNATION	Total height	SERIAL NUMBER	0,63	0,81	1,0	1,2
MultiRail sliding block for cable holder Type 12 (cable exit runs within the rail)	23mm	193.001.322				



ARTICLE DESIGNATION	Total height	SERIAL NUMBER	1,0	1,2	1,5
MultiRail sliding block for attaching sleeve + cable	23mm	193.001.321	